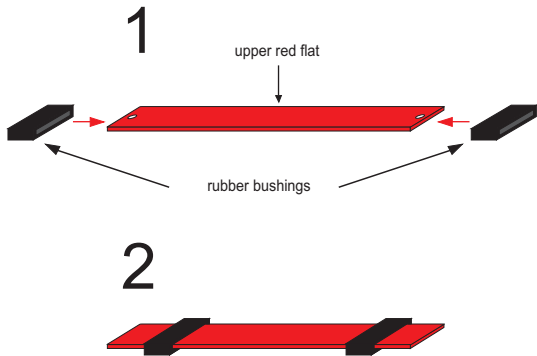


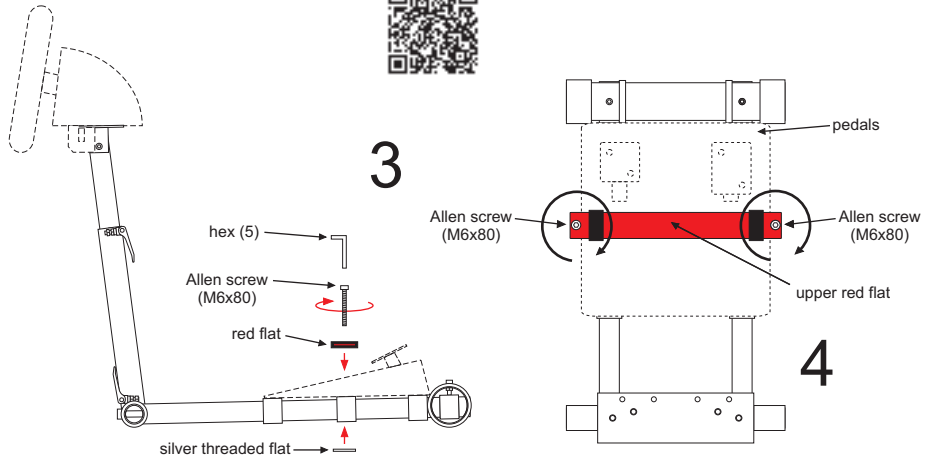


Please visit our YouTube channel for all the **set up videos** at: <http://www.youtube.com/user/wheelstandpro>

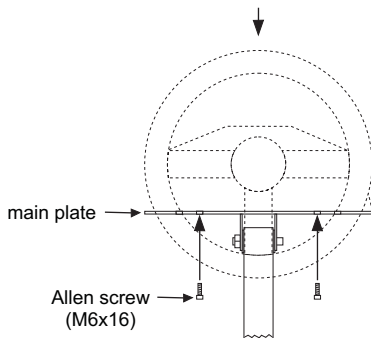
**2014 pedals fastening video
(standard 2-pedals set)**



**TX, T300RS
set up video**



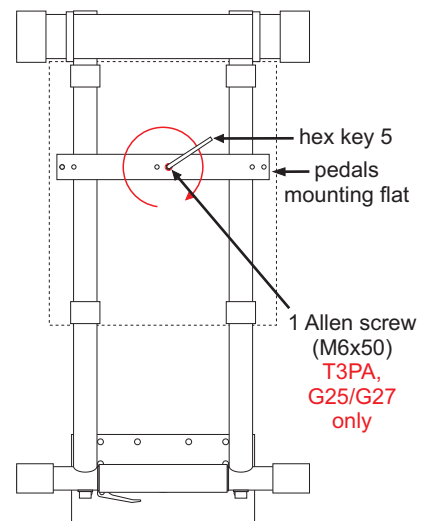
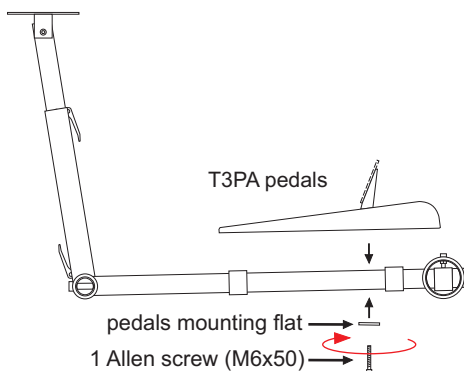
steering wheel
(T300 RS, T500 RS, TX Racing Wheel)



Drive 2 M6x16 Allen screws to connect the steering wheel (T300RS, T500 RS and TX Racing Wheel) with the main plate (without shifter plate - **see set up video**).

For better stability place both feet on the pedals.

Please see set up video.



Place your T3PA pedals in the centre of the stand and drive 1 Allen screws (M6x50) to fix it firmly.
Allen screw (M6x50) is for G27 and T3PA pedals only.

PLEASE ALSO SEE CONSTRUCTOR'S TIPS: <http://www.wheelstandpro.com/contips.html>

Tightening the screws too much can cause damage to the wheel and pedals.

